








-  Tillage
-  Haulage
-  Landscaping
-  Seeding & Plantation
-  Crop Protection
-  Harvest
-  Post Harvest

*Solutions...*



31-05-2019

# FIELDKING

## Wheeled Disc Heavy Series



### FIELDKING USA, INC.

960 Holmdel Road Suite 2-02, Holmdel, NJ 07733, USA

✉ [usa@fieldking.com](mailto:usa@fieldking.com), [www.fieldkingusa.com](http://www.fieldkingusa.com)

- [Operator Manual](#)
- [Service Manual](#)
- [Part Catalogue](#)

# CONGRATULATIONS!

You have invested in one of the best implements of its type in the market today.

The care you give your "FIELDKING USA" implement will greatly determine your satisfaction with its performance and its service life. A careful study of this manual will give you a thorough understanding of your new implement before operating.

If your manual is lost or destroyed, "FIELDKING USA" will be glad to provide you a new copy. Visit to nearest dealership & get a copy. Most of our manuals can also be downloaded from our website at [www.fieldkingusa.com](http://www.fieldkingusa.com).

As an authorized "FIELDKING USA" dealer, we stock genuine "FIELDKING USA" parts which are manufactured with the same precision and skill as our original equipment. Our trained service persons are well informed on methods required to service "FIELDKING USA" equipments and are ready to help you.

Should you require additional information or assistance, please contact us.

YOUR AUTHORIZED

FIELDKING USA DEALER

BECAUSE "FIELDKING USA" MAINTAINS AN ONGOING PROGRAMME OF PRODUCT IMPROVEMENT, WE RESERVE THE RIGHT TO MAKE IMPROVEMENTS IN DESIGN OR CHANGE IN SPECIFICATION WITHOUT INCURRING ANY OBLIGATION TO INSTALL THEM ON UNITS PREVIOUSLY SOLD. BECAUSE OF THE POSSIBILITY THAT SOME PHOTOGRAPHS IN THIS MANUAL WERE TAKEN OF PROTOTYPE MODELS, PRODUCTION MODELS MAY VARY IN SOME DETAIL. IN ADDITION, SOME PHOTOGRAPHS MAY SHOW SHIELDS REMOVED FOR THE PURPOSE OF CLARITY. NEVER OPERATE THIS IMPLEMENT WITHOUT ALL SHIELDS IN PLACE.

## TO THE PURCHASER

This manual contains valuable information about your new “FIELDKING USA” Wheeled Disc Heavy Series. It has been carefully prepared to give you helpful suggestions for operating, adjusting, servicing and ordering spare parts.

Keep this manual in a convenient place for quick and easy reference. Study it carefully. You have purchased a dependable and sturdy Wheeled Disc Heavy Series but only by proper care and operation you can expect to receive the service and long life designed and built into it.

Sometime in the future your Wheeled Disc Heavy Series may need new parts to replace those that are worn or broken. If so, go to your dealer and provide him with the model and part number.

## CUSTOMER INFORMATION

Name \_\_\_\_\_

Purchased From \_\_\_\_\_

Date of Purchase \_\_\_\_\_

Model No. \_\_\_\_\_

Serial No. \_\_\_\_\_

## PURCHASER / OPERATOR'S RESPONSIBILITY

1. Read and understand the information contained in this manual.
2. Operate, lubricate, assemble and maintain the equipment in accordance with all instructions and safety procedures in this manual.
3. Inspect the equipment and replace or repair any parts that are damaged or worn out which under continued operation would cause damage, wear to other parts, or cause a safety hazard.
4. Return the equipment or parts to the authorized “FIELDKING USA” dealer, from where it was purchased, for service or replacement of defective parts that are covered by warranty. (The “FIELDKING USA” Factory may inspect equipment or parts before warranty claims are honored.)
5. All costs incurred by the dealer for traveling to or transporting the equipment for warranty inspection and claims will be borne by the customer.

## **1. TECHNICAL DATA**

1.1 Introduction

1.2 Warranty

1.3 When the warranty becomes void

1.4 Warning

## **2. USAGE INSTRUCTIONS**

2.1 Before Use & Adjustments

2.2 Attaching Harrow to the tractor

2.3 Warning for driver

2.4 Safety

## **3. MAINTENANCE**

3.1 Maintenance Instructions

3.2 Storage of machine after work

3.3 Lubrication

3.4 Instruction for driver

## **4. OPERATIONAL GUIDELINES FOR HARROW**

## **5. TROUBLE SHOOTING CHART**

## 1. TECHNICAL DATA

### 1.1 INTRODUCTION

This handbook contains the use and maintenance instructions with a list of the spare parts of the Wheeled Disc Heavy Series.

This disc harrow is equipped with heavy-duty box frame specially designed for harrowing / land preparation of rough soil (Secondary finer operation).

Regular and satisfactory operation together with economic and long lasting use of the implement depends on the compliance with instructions given in this handbook.

Compliance with the instructions in this handbook is also important since manufacturer declines all and every responsibility for damage to persons or property caused by negligence and failure to comply with these instructions.

### 1.2 WARRANTY

When the machine is delivered, check that it has not been subjected to damage during transport and that the accessories are in a perfect condition and complete.

Any claims following the receipt of damaged goods shall be presented in writing within 8 days from the receipt of the goods.

The purchaser may only make the claims under warranty when he has complied with the warranty conditions in the supply contract.

### 1.3 WHEN THE WARRANTY BECOMES VOID

Besides the cases specified in the supply agreement, the warranty shall in any case become void.

1. When the implement has been used beyond the specified power limit like (Tractor horse power).
2. When repairs made by the customer without authorization from the manufacturer or owing to installation of spurious spare parts, the machine is subjected to variations and the damage can be ascribed to these variations.
3. When the user has failed to comply with the instructions in this handbook.
4. If the implement is used in very hard/stony soil no warranty of discs will be given.
5. No warranty will be given if the service and greasing is not done on time.

### 1.4 WARNING

1. Thoroughly read the instruction manual before proceeding with the various operations.
2. Maintain the harrow as per the instructions of this handbook to be entitled for warranty.

## 2. USAGE INSTRUCTIONS

### 2.1 BEFORE USE & ADJUSTMENTS

1. Before mounting of disc harrow make sure that all nuts & bolts are properly secured.
2. Also determine soil and trash conditions of the field and make the preliminary adjustments. e.g.

#### a) Disc gang angle adjustment

Gang angle (Angle between two gangs) ranges between 0° to 50°. The angle can be increased for better penetration in dry soil while it should be reduced to avoid clogging in wet soil.

#### b) Disc harrow leveling

To eliminate uneven penetration and side draft, leveling is done by means of drawbar adjustment. While tractor pulls to right the rear gang should be lowered a little. When the tractor pulls to the left the rear gang should be raised.

#### c) Scraper adjustment

The scraper can be adjusted by loosening the bolts at the scraper clamp.

#### d) Depth control

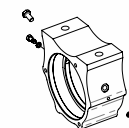
The depth at which the implement is required to work is controlled hydraulically by raising or lowering the control lever on the tractor.

#### e) Disc harrow penetration

Factors affecting disc harrow penetration are

1. Angle of the gang
2. Weight of the harrow
3. Disc diameter
4. Disc sharpness
5. Blunt disc increases the draft considerably, check the disc sharpness
6. Angle of hitch

#### f) Greasing nipple position during operation should be as shown in figure.



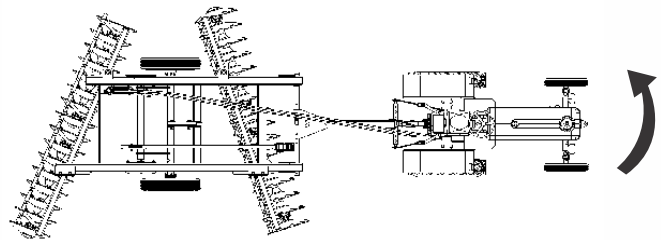
**IMPORTANT NOTE** : TO AVOID FROM DUST & MUD THIS GREASE NIPPLE DIRECTION SHOULD BE IN REAR SIDE OF BOTH FRONT AND REAR GANG DURING FIELD OPERATION

## 2.2 ATTACHING THE HARROW TO THE TRACTOR

1. Place the harrow duly leveled on the flat piece of land.
2. Reverse the tractor to the harrow (Do not drag the harrow up the tractor).
3. Attach tongue (Hook) of harrow securely to the towing tractor using drawbar pin.
4. Connect cleaned hydraulic couplers (Q.R.C value) of harrow to tractor.

### a) Maneuver direction

Never maneuver to the right hand side, because the angle formed by the disc angle, transmits great effort to the implement, overloading mainly the pulling components i.e. offset bar, drawbar etc.



## 2.3 WARNING FOR THE DRIVER

1. Before harrowing check all nuts & bolts of the disc harrow.
2. Be vigilant about the tree roots and stones. Don't harrow on stony soil.
3. Tractor should be in first high or fourth low gear.
4. Don't allow anyone to come across the harrow.
5. Before lifting the Wheeled Disc Heavy Series check the hydraulic couplers (Q.R.C value) & pressure flow properly.
6. Lift the Wheeled Disc Heavy Series with the help of hydraulic pressure before approaching the road.

## 1.4 SAFETY

Understanding the machine safety labels



**Safety-Alert Symbol**

The machine safety labels shown in this section are placed in important areas on your machine to draw attention to potential safety hazards

On your machine the words DANGER, WARNING, and CAUTION are used with this safety-alert symbol. DANGER identifies the most serious hazards.

The operator's manual also explains any potential safety hazards whenever necessary.

► Before harrowing with disc harrow take care that nobody stands near it.



In order to protect yourself always wear adequate clothes and shoes during the operations.



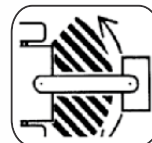
Never use your hands to check hydraulic leaks. Escaping hydraulic oil under pressure may have sufficient force to penetrate the skin causing injury.



Never allow riders on the tractor or implement unless an additional seat is available.



Be careful when moving around steep gradient to avoid sharp turn.



Never transport the implement on rough roads during the night. When operating, avoid sharp turns that may cause tractor colliding with the implement.

## 3. MAINTENANCE

### 3.1 MAINTENANCE INSTRUCTIONS

If you work the Wheeled Disc Heavy Series on stony land then maintenance also increases.

1. If the soil has entered the grease nipple, then change the nipple.
2. If disc harrow is new after initial working of first two hours, tighten all nuts & bolts.
3. After every fifty hours grease all greasing points with grease gun and tighten all nuts & bolts.
4. After fifty hours, open the bearing hub/bearing spool of Wheeled Disc Heavy Series & cleanse with diesel oil & pump in new grease.
5. Check hydraulic cylinder oil leakage occasionally.

### 3.2 STORAGE OF MACHINE AFTER WORK

1. Wash the Wheeled Disc Heavy Series after work.
2. Replace the worn out nuts & bolts.
3. If Wheeled Disc Heavy Series has to remain unused for long time then clean it & apply a layer of used oil for rust prevention.

These steps will enhance the life of your disc harrow.

### 3.3 LUBRICATION

1. Please take care that the high quality grease is used in the greasing points.
2. Please take care that the high quality hydraulic oil is used in the hydraulic cylinder.



Be careful with the environment. Do not spill combustible oil, battery and filter residues in the soil. These trashes in contact with the soil reach sub layer which directly damage the environment. Look for the information to recycle or re-use them.

### 3.4 INSTRUCTIONS FOR DRIVER

1. In case of scraper touching the discs, loosen the scraper bolt and readjust the scraper.
2. Never reverse the tractor when the harrow is engaged in the soil.
3. Never turn the tractor to the right or left when the harrow is engaged in the soil.
4. Properly fit the drawbar hook duly locked with lynch pin.
5. To get good results from the harrow, disc should be replaced when its diameter is reduced by 5" from its original size.
6. When Wheeled Disc Heavy Series is ready for use don't stand between harrow & the tractor.

### 4. OPERATIONAL GUIDELINES FOR HARROW

1. Adding of wheel weights/water ballasting or combination of both is recommended when excessive rear wheel slippage is experienced.
2. Adjust internal /external check chains to obtain implement swing range within 50 mm (2") when raised.
3. Always maintain the correct tyre pressure to avoid wheel slippage.
4. Always set hydraulic levers correctly for draft and position control operation.

**The following settings are necessary to ensure that uniform working depth is maintained**

#### a.) Side Draft

The Wheeled Disc Heavy Series will trail correctly behind the tractor provided the side thrust of the front gang is equal to that of rear. In case it is different there will be side draft. To set it correctly, the gang angle should be changed.

#### b.) Severe Side Draft

In case of severe side draft the cutting depth of rear disc gang should be increased or decreased.

#### Precautions during transportation

1. When transporting lift the harrow on tyres.
2. Set hydraulic levers in top raised position and lock levers.
3. Maintain the speed to avoid jumps.
4. Watch while over taking on road.
5. Always use SMV (Slow Moving Vehicles) symbols.



**Dear user!**  
**Respect the Ecology.**  
**Do not throw the trash away.**  
**This gesture helps to protect our Environment.**

## 5. TROUBLE SHOOTING CHART

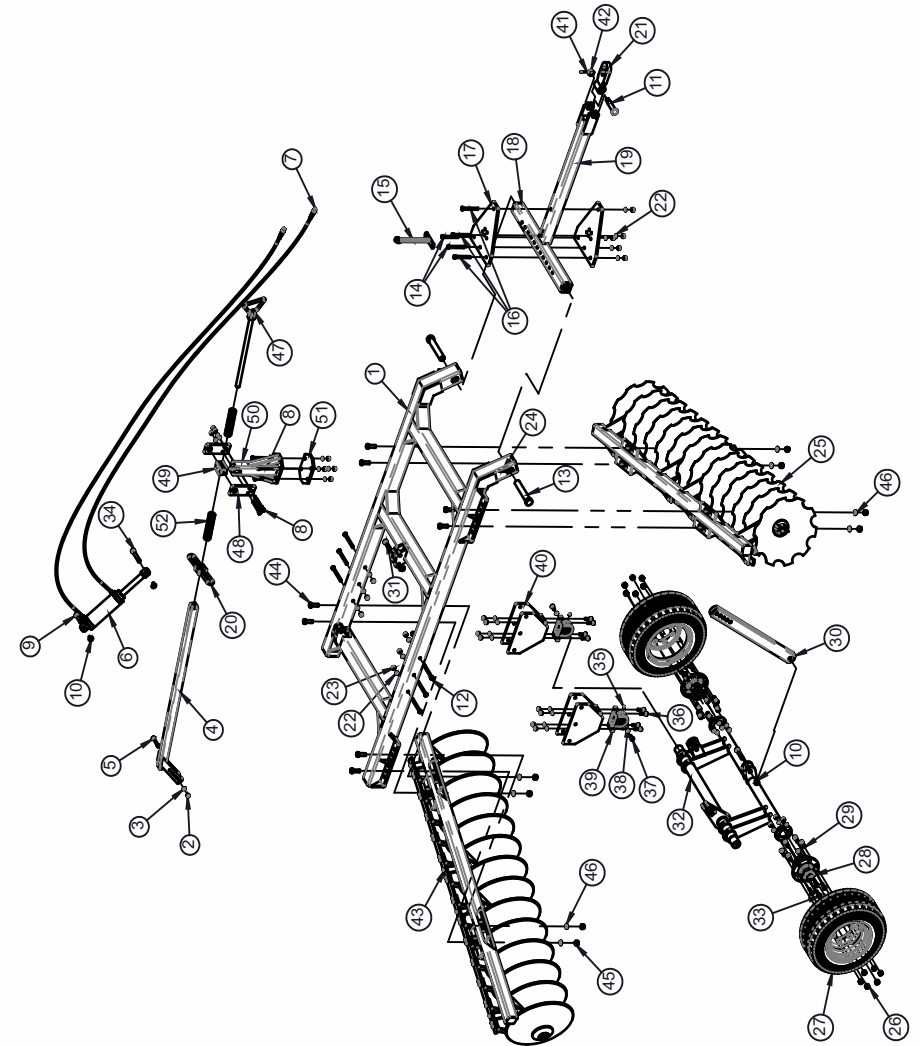
| SR. NO.                            | POSSIBLE CAUSES                              | POSSIBLE REMEDIES  |
|------------------------------------|--|--|
| <b>A. Side Draft</b>               |  |  |
| 1.                                 | Disc not running level                       | Adjust using leveling lever                                      |
| 2.                                 | Gangs improperly angled                      | Set the gangs  |
| 3.                                 | Too much left hand offset.                   | By adjusting the drawbar plate bolt                              |
| <b>B. Excessive field slippage</b> |  |  |
| 1.                                 | Tractor overloaded                           | Reduce angle, reduce depth.                                      |
| 2.                                 | Not enough tractor ballast                   | Add wheel weight or liquid                                       |
| <b>C. Not filling the furrow</b>   |  |  |
| 1.                                 | Too much left hand offset                    | By adjusting the drawbar   |
| 2.                                 | Tractor wheel running in furrow enlarging it | Drive the tractor in un worked ground                            |
| 3.                                 | Disc too far from furrow                     | Keep the left front discs in furrow                              |
| 4.                                 | Rear gang set wrong, laterally.              | By adjustment of gang box angle                                  |
| <b>D. Poor penetration</b>         |  |  |
| 1.                                 | Hard ground                                  | Increase angle between front and rear gang.                      |
| <b>E. Disc unsteady</b>            |  |  |
| 1.                                 | Too much angle in gang                       | Reduce the gang angle  |
| <b>F. Gang clogging</b>            |  |  |
| 1.                                 | Field too wet.                               | Disc at shallow depth for first pass to speed up drying process. |
| 2.                                 | Gang set in maximum angle.                   | Reduce the angle   |
| 3.                                 | Not using scrapers                           | Install scrapers.  |
| 4.                                 | Scrapers worn out or not set properly.       | Replace worn ones. Adjust scrapers close to the disc             |
| 5.                                 | Disc is too deep in damp soil                | Reduce penetration   |

## 6. PARTS CATALOGUE

1. Wheeled Disc Heavy Series
2. Wheeled Disc Heavy Series With Crumbler



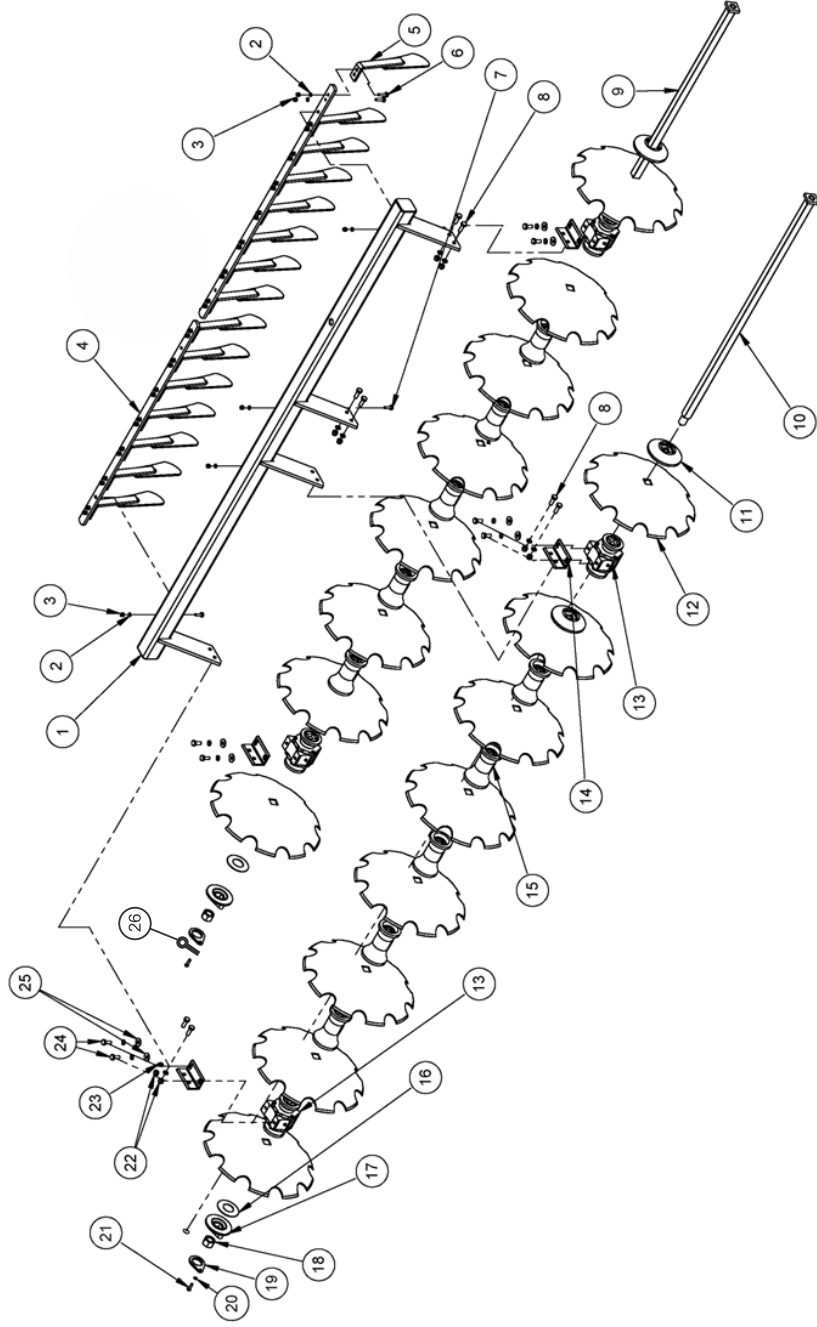
| Wheeled Disc Heavy Series |   |                                |          |          |          |          |          |     |       |       |       |       |
|---------------------------|---|--------------------------------|----------|----------|----------|----------|----------|-----|-------|-------|-------|-------|
| SrNo.                     | Description                             | Part Code                      |          |          |          |          | Quantity |     |       |       |       |       |
|                           |   | 9X9                            | 10X10    | 11X11    | 12X12    | 14X14    | 16X16    | 9X9 | 10X10 | 11X11 | 12X12 | 14X14 |
| 1                         | FRAME ASSEMBLY                          | 74800002                       |          | 74430001 |          |          | 1        |     |       |       |       |       |
| 2                         | NYLOCK NUT M16x2P                       | 10280005                       |          |          |          |          | 24       |     |       |       |       |       |
| 3                         | SPRING WASHER 16MM                      | 10270005                       |          |          |          |          | 26       |     |       |       |       |       |
| 4                         | REAR GANG ASS. WITH GANG BOX & SCRAPER  | 76070008                       |          |          |          |          | 1        |     |       |       |       |       |
| 5                         | HEX HEAD BOLT M16X120X2MM               | 10260455                       |          |          |          |          | 1        |     |       |       |       |       |
| 6                         | HYDRAULIC CYLINDER ASSY                 | 10450001                       |          | 10450012 |          |          | 1        |     |       |       |       |       |
| 7                         | HOSE PIPE ASSEMBLY                      | 74600001                       |          |          |          |          | 2        |     |       |       |       |       |
| 8                         | HEX HEAD BOLT 16X160X2MM                | 10260406                       |          |          |          |          | 7        |     |       |       |       |       |
| 9                         | PIN 25X100MM                            | 10020069                       |          |          |          |          | 1        |     |       |       |       |       |
| 10                        | LINCH PIN 10MM                          | 10020022                       |          |          |          |          | 4        |     |       |       |       |       |
| 11                        | PIN                                     | 79480006                       |          |          |          |          | 1        |     |       |       |       |       |
| 12                        | HEX HEAD BOLT M18X180X2.5MM             | 10260156                       |          |          |          |          | 6        |     |       |       |       |       |
| 13                        | PIN 50X280MM                            | 10020053                       |          |          |          |          | 2        |     |       |       |       |       |
| 14                        | HEX HEAD BOLT 18X170X2.5MM              | 10260226                       |          |          |          |          | 2        |     |       |       |       |       |
| 15                        | SPRING MOUNTING PIPE ASSY.              | 79220011                       |          |          |          |          | 1        |     |       |       |       |       |
| 16                        | HEX HEAD BOLT 18X160X2.5MM              | 10260207                       |          |          |          |          | 3        |     |       |       |       |       |
| 17                        | BEARING HUB ASSEMBLY                    | 74520001                       |          |          |          |          | 2        |     |       |       |       |       |
| 18                        | CENTER LINK PIPE ASSEMBLY               | 74810001                       |          | 74440001 |          |          | 1        |     |       |       |       |       |
| 19                        | DRAWBAR ASSEMBLY                        | 74450001                       |          |          |          |          | 1        |     |       |       |       |       |
| 20                        | THREADED BUSH ASSY.                     | 79220008                       |          |          |          |          | 1        |     |       |       |       |       |
| 21                        | HOOK ASSEMBLY + BRACKET ASSY.           | 10560001 + 74450013            |          |          |          |          | 1        |     |       |       |       |       |
| 22                        | SPRING WASHER 18MM                      | 10270006                       |          |          |          |          | 11       |     |       |       |       |       |
| 23                        | NYLOCK NUT M18X2.5MM                    | 10280020                       |          |          |          |          | 11       |     |       |       |       |       |
| 24                        | SPRING PIN M10X75MM                     | 10020082                       |          |          |          |          | 2        |     |       |       |       |       |
| 25                        | FRONT GANG ASS. WITH GANG BOX & SCRAPER | 76070006                       | 76070005 | 76070004 | 72070007 | 76070003 | 74610001 | 1   |       |       |       |       |
| 26                        | HUB NUT 22X11G 5/8                      | 10280061                       |          |          |          |          | 12       |     |       |       |       |       |
| 27                        | TYRE WITH RIM ASSEMBLY                  | 11030024 / 11030028 / 11030026 |          |          |          |          | 2        |     |       |       |       |       |
| 28                        | TYRE HUB ASSEMBLY                       | 74500001                       |          |          |          |          | 2        |     |       |       |       |       |
| 29                        | HUB BOLT 22X11G 5/8 X 70MM              | 10260227                       |          |          |          |          | 12       |     |       |       |       |       |
| 30                        | TYRE SYSTEM LOCKING ASSEMBLY            | 75580001                       |          |          |          |          | 1        |     |       |       |       |       |
| 31                        | PIN 25X125MM                            | 10020070                       |          |          |          |          | 2        |     |       |       |       |       |
| 32                        | TYRE SYSTEM ASSEMBLY                    | 74820001                       |          | 74490001 |          |          | 1        |     |       |       |       |       |
| 33                        | HEX HEAD BOLT M16X55X2MM                | 10260204                       |          |          |          |          | 8        |     |       |       |       |       |
| 34                        | PIN 25X152MM                            | 10020088                       |          |          |          |          | 1        |     |       |       |       |       |
| 35                        | GREASE NIPPLE M10X15X1.5MM              | 10300005                       |          |          |          |          | 12       |     |       |       |       |       |
| 36                        | HEX HEAD BOLT 16X65X2MM                 | 10260017                       |          |          |          |          | 8        |     |       |       |       |       |
| 37                        | HEX HEAD BOLT M16X40X2MM                | 10260120                       |          |          |          |          | 2        |     |       |       |       |       |
| 38                        | CENTER SUPPORT HUB AXLE LOCK PLATE      | 74530004                       |          |          |          |          | 2        |     |       |       |       |       |
| 39                        | AXLE HUB                                | 10090035                       |          |          |          |          | 2        |     |       |       |       |       |
| 40                        | AXLE HUB MOUNTING ASSEMBLY              | 74480001                       |          |          |          |          | 2        |     |       |       |       |       |
| 41                        | SPLIT PIN 4MMX55MM                      | 10020054                       |          |          |          |          | 1        |     |       |       |       |       |
| 42                        | CASTLE NUT M30X3.5M                     | 10280019                       |          |          |          |          | 1        |     |       |       |       |       |
| 43                        | REAR GANG ASS. WITH GANG BOX & SCRAPER  | 76070011                       | 76070010 | 76070009 | 76070008 | 76070007 | 76070002 | 1   |       |       |       |       |
| 44                        | HEX HEAD BOLT M24X90X3MM                | 10260469                       |          |          |          |          | 8        |     |       |       |       |       |
| 45                        | HEX HEAD BOLT 16X160X2MM                | 10260075                       |          |          |          |          | 8        |     |       |       |       |       |
| 46                        | SPRING WASHER 24MM                      | 10270027                       |          |          |          |          | 8        |     |       |       |       |       |
| 47                        | THREADED ROD ASSY.                      | 79220022                       |          |          |          |          | 1        |     |       |       |       |       |
| 48                        | SPRING MOUNTING FLAT                    | 79220005                       |          |          |          |          | 2        |     |       |       |       |       |
| 49                        | THREAD ROD BUSH                         | 79220021                       |          |          |          |          | 1        |     |       |       |       |       |
| 50                        | COIL SPRING BRACKET ASSY                | 79220001                       |          |          |          |          | 1        |     |       |       |       |       |
| 51                        | BASE PLATE SPRING ATTACHMENT            | 79220002                       |          |          |          |          | 1        |     |       |       |       |       |
| 52                        | SPRING                                  | 10210025                       |          |          |          |          | 2        |     |       |       |       |       |



WHEELED DISC HEAVY SERIES

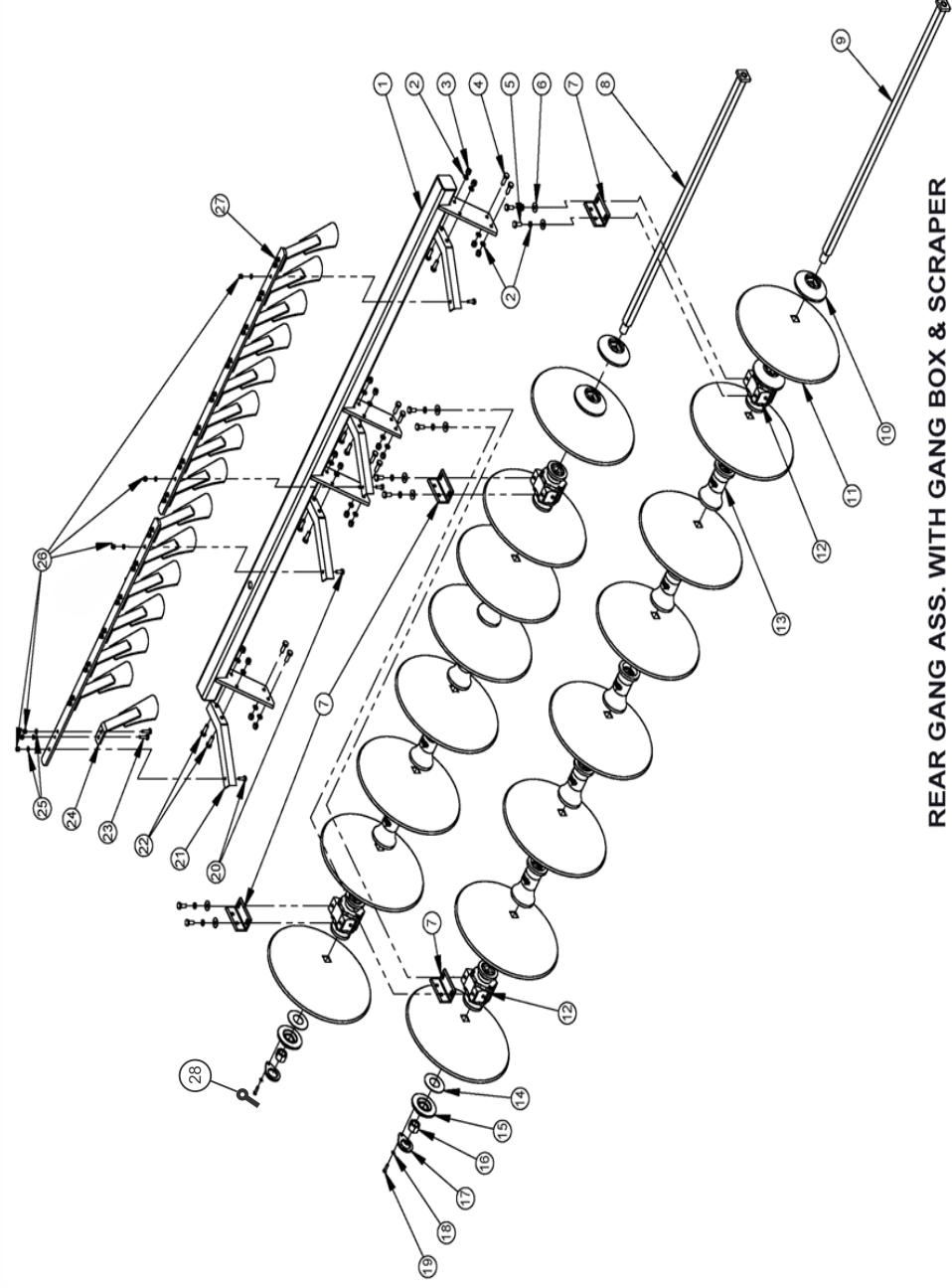
**FRONT GANG ASS WITH GANG BOX SCRAPER**

| Sr No. | Description                 | Part Code |          |          |          |          |          | Quantity |       |       |       |       |       |  |
|--------|-----------------------------|-----------|----------|----------|----------|----------|----------|----------|-------|-------|-------|-------|-------|--|
|        |                             | 9X9       | 10X10    | 11X11    | 12X12    | 14X14    | 16X16    | 9X9      | 10X10 | 11X11 | 12X12 | 14X14 | 16X16 |  |
| 1      | GANG BOX FRONT ASSEMBLY     | 74840001  | 74870001 | 74900001 | 74930001 | 75000001 | 74460001 |          |       |       |       |       |       |  |
| 2      | SPRING WASHER 12MM          |           |          | 10270003 |          |          |          | 11       | 13    | 14    | 15    | 17    | 19    |  |
| 3      | NYLOCK NUT M12X1.75         |           |          | 10280025 |          |          |          | 11       | 13    | 14    | 15    | 17    | 19    |  |
| 4      | SCRAPER HOLDING FLAT ASSY.  | 74860022  | 74860023 | 74860024 | 74860025 | 74860026 | 74860027 |          |       |       |       |       |       |  |
| 5      | SCRAPPER ASSEMBLY FRONT     |           |          | 74540001 |          |          |          | 8        | 9     | 10    | 11    | 13    | 15    |  |
| 6      | HEX HEAD BOLT M12X80X1.75MM |           |          | 10260447 |          |          |          | 5        | 6     | 6     | 8     | 11    | 11    |  |
| 7      | HEX HEAD BOLT M12X70X1.75MM |           |          | 10260064 |          |          |          | 8        | 9     | 10    | 11    | 13    | 15    |  |
| 8      | HEX HEAD BOLT M16X50X2MM    |           |          | 10260358 |          |          |          | 6        |       |       |       |       |       |  |
| 9      | HEX HEAD BOLT M16X55X2MM    |           |          | 10260454 |          |          |          | 6        |       |       |       |       |       |  |
| 10     | SQ. AXLE ASSEMBLY           | 74830001  | 74890001 | 74920001 | 74920001 | 75080001 | 74530001 | 1        | 2     | 1     | 2     | 2     | 2     |  |
| 11     | BIG CHAPPAN 40MM SQUARE     |           |          | 10360006 |          |          |          | 1        |       |       |       |       |       |  |
| 12     | NOTCHED DISC 26"X6MM        |           |          | 10240041 |          |          |          | 9        | 10    | 11    | 12    | 14    | 16    |  |
| 13     | BEARING HUB ASSEMBLY        |           |          | 74520001 |          |          |          | 3        |       |       |       |       |       |  |
| 14     | HUB ANGLE                   |           |          | 74530007 |          |          |          | 3        |       |       |       |       |       |  |
| 15     | PLAIN SPOOL 42 SQ. (9")     |           |          | 10340018 |          |          |          | 5        | 4     | 5     | 6     | 8     | 10    |  |
| 16     | DISC WASHER 127X3MM (T)     |           |          | 10270022 |          |          |          | 1        |       |       |       |       |       |  |
| 17     | SMALL CHAPPAN               |           |          | 10360007 |          |          |          | 1        |       |       |       |       |       |  |
| 18     | PLAIN NUT 40MM              |           |          | 10280050 |          |          |          | 1        |       |       |       |       |       |  |
| 19     | GANG LOCK PLATE             |           |          | 74830003 |          |          |          | 1        |       |       |       |       |       |  |
| 20     | SPRING WASHER 10MM          |           |          | 10270002 |          |          |          | 1        |       |       |       |       |       |  |
| 21     | HEX HEAD BOLT 10X35X1.5 MM  |           |          | 10260053 |          |          |          | 1        |       |       |       |       |       |  |
| 22     | NYLOCK NUT M16X2MM          |           |          | 10280005 |          |          |          | 6        |       |       |       |       |       |  |
| 23     | SPRING WASHER 16MM          |           |          | 10270005 |          |          |          | 14       |       |       |       |       |       |  |
| 24     | HEX HEAD BOLT M16X40X2MM    |           |          | 10260120 |          |          |          | 6        |       |       |       |       |       |  |
| 25     | PLAIN WASHER 16MM           |           |          | 10270020 |          |          |          | 6        |       |       |       |       |       |  |
| 26     | SPLIT PIN 4MMX65MM (L)      |           |          | 10020055 |          |          |          | 1        |       |       |       |       |       |  |



**FRONT GANG ASS. WITH GANG BOX & SCRAPER**

| REAR GANG ASS. WITH GANG BOX SCRAPER |  |           |          |          |          |          |          |     |       |          |       |       |       |
|--------------------------------------|--|-----------|----------|----------|----------|----------|----------|-----|-------|----------|-------|-------|-------|
| Sr. No.                              | Description                                | Part Code |          |          |          |          |          |     |       | Quantity |       |       |       |
|                                      |  | 9X9       | 10X10    | 11X11    | 12X12    | 14X14    | 16X16    | 9X9 | 10X10 | 11X11    | 12X12 | 14X14 | 16X16 |
| 1                                    | GANG BOX REAR ASS.                         | 74850001  | 74870001 | 74910001 | 74940001 | 75070001 | 74470001 |     |       |          |       | 1     |       |
| 2                                    | SPRING WASHER 16MM                         |           |          | 10270005 |          |          |          | 22  |       |          |       | 24    |       |
| 3                                    | NYLOCK NUT M16x2P                          |           |          | 10280005 |          |          |          | 14  |       |          |       | 16    |       |
| 4                                    | HEX BOLT M16x55x2P                         |           |          | 10260204 |          |          |          | 6   |       |          |       | 8     |       |
| 5                                    | HEX BOLT M16x40x2P                         |           |          | 10260120 |          |          |          | 6   |       |          |       | 8     |       |
| 6                                    | PLAIN WASHER 16MM                          |           |          | 10270020 |          |          |          | 6   |       |          |       | 8     |       |
| 7                                    | HUB ANGLE                                  |           |          | 74530007 |          |          |          | 3   |       |          |       | 4     |       |
| 8                                    | SQ. AXLE ASSEMBLY                          | 74530001  | 74530001 | 74530001 | 75080001 | 74530001 |          | 2   | 2     | 1        | 2     | 2     | 2     |
| 9                                    |  | 74890001  | 74890001 |          |          |          |          | 1   | 1     |          |       |       |       |
| 10                                   | BIG CHAPPEN                                |           |          | 10360006 |          |          |          |     |       |          | 2     |       |       |
| 11                                   | PLAIN DISC 26" (SQ. HOLE-42MM)             |           |          | 10240034 |          |          |          | 9   | 10    | 11       | 12    | 14    | 16    |
| 12                                   | BEARING HUB ASSEMBLY                       |           |          | 74520001 |          |          |          | 3   |       |          |       | 4     |       |
| 13                                   | PLAIN SPOOL 42 SQ. (9")                    |           |          | 10340018 |          |          |          | 5   | 4     | 5        | 6     | 8     | 10    |
| 14                                   | DISC WASHER                                |           |          | 10270022 |          |          |          | 1   |       |          |       | 2     |       |
| 15                                   | SMALL CHAPPEN                              |           |          | 10360007 |          |          |          | 1   |       |          |       | 2     |       |
| 16                                   | PLAIN NUT 40XGG1 3/8 1 1/2 P. (BSW THREAD) |           |          | 10280050 |          |          |          | 1   |       |          |       | 4     |       |
| 17                                   | GANG LOCK PLATE                            |           |          | 74830003 |          |          |          | 1   |       |          |       | 2     |       |
| 18                                   | SPRING WASHER 10MM                         |           |          | 10270002 |          |          |          | 1   |       |          |       | 2     |       |
| 19                                   | HEX HEAD BOLT M10x35x1.5P                  |           |          | 10260053 |          |          |          | 1   |       |          |       | 2     |       |
| 20                                   | HEX BOLT M12x80x1.75P                      |           |          | 10260447 |          |          |          | 3   |       |          |       | 4     |       |
| 21                                   | REAR SUPPORT HOLDING BEND ANGLE            |           |          | 74550004 |          |          |          | 3   |       |          |       | 4     |       |
| 22                                   | HEX BOLT M16X50X2P                         |           |          | 10260358 |          |          |          | 3   |       |          |       | 4     |       |
| 23                                   | HEX BOLT M12X70X1.75P                      |           |          | 10260407 |          |          |          | 8   | 9     | 10       | 11    | 13    | 15    |
| 24                                   | SCRAPER ASSY. REAR                         |           |          | 74550001 |          |          |          | 8   | 9     | 10       | 11    | 13    | 15    |
| 25                                   | SPRING WASHER 12MM                         |           |          | 10270003 |          |          |          | 11  | 13    | 14       | 15    | 17    | 19    |
| 26                                   | NYLOCK NUT M12x1.75P                       |           |          | 10280025 |          |          |          | 11  | 13    | 14       | 15    | 17    | 19    |
| 27                                   | SCRAPER HOLDING FLAT ASSY.                 | 74860022  | 74860023 | 74860024 | 74860025 | 74860026 | 74860027 |     |       |          |       | 1     |       |
| 28                                   | SPLIT PIN Ø4x65L                           |           |          | 10020055 |          |          |          |     |       |          |       | 1     |       |

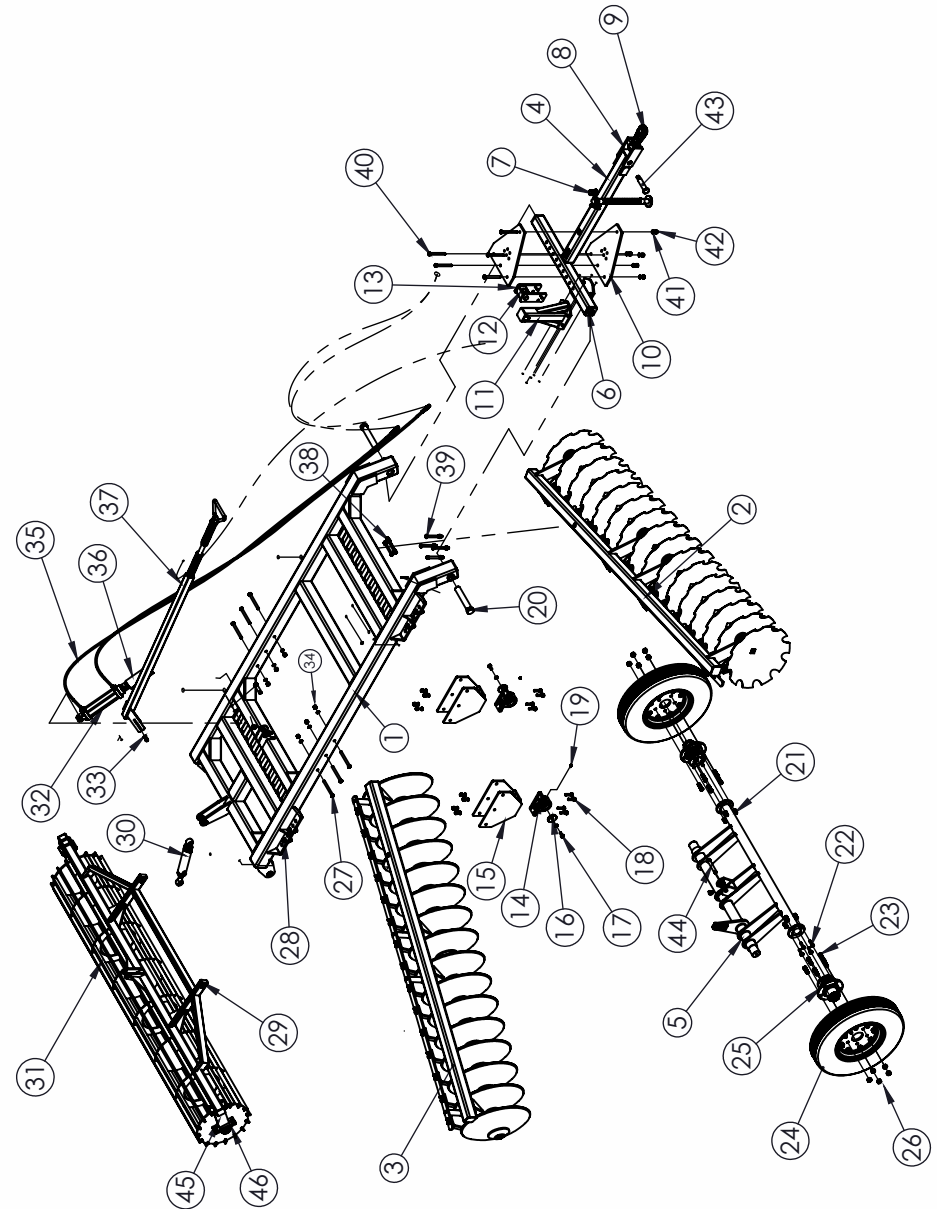


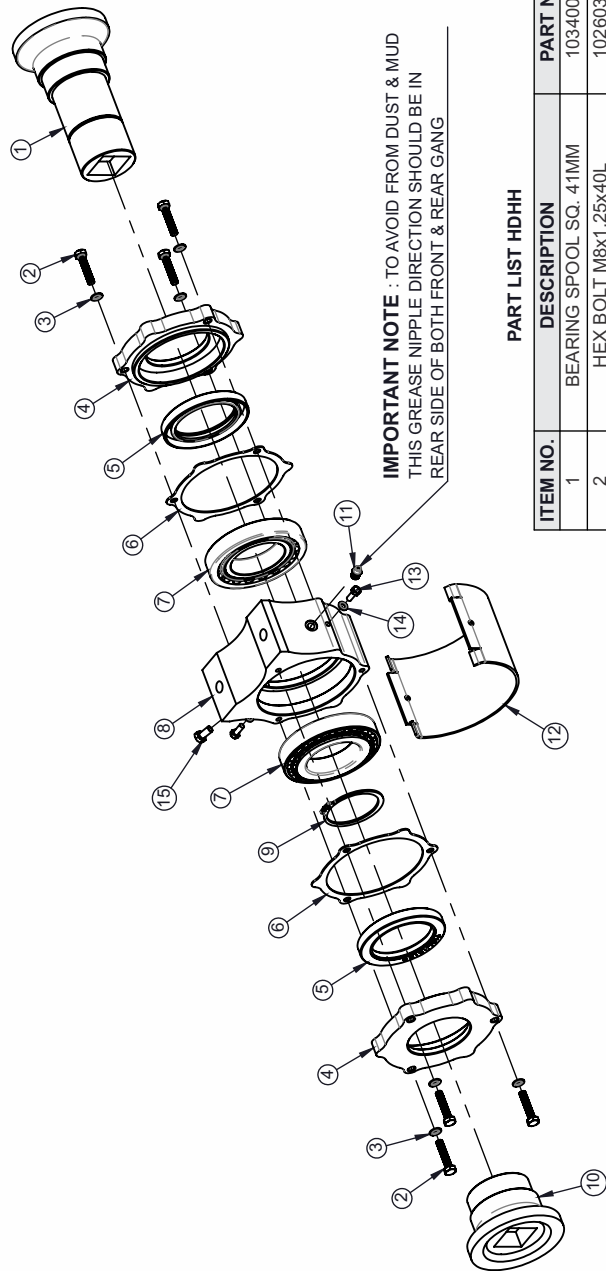
REAR GANG ASS. WITH GANG BOX & SCRAPER

### WHEELED DISC HEAVY SERIES WITH CRUMBLER

| ITEM NO. | DESCRIPTION                         | PART NUMBER                |          |          | QTY. |       |       |
|----------|-------------------------------------|----------------------------|----------|----------|------|-------|-------|
|          |                                     | 9x9                        | 11x11    | 14x14    | 9x9  | 11x11 | 14x14 |
| 1        | MAIN FRAME ASSEMBLY                 | 74800004                   |          | 74800005 | 1    |       |       |
| 2        | FRONT GANG BOX ASSEMBLY             | 74840001                   | 74900001 | 75000001 | 1    |       |       |
| 3        | REAR GANG BOX ASSEMBLY              | 74850001                   | 74910001 | 75070001 | 1    |       |       |
| 4        | DRAWBAR ASSEMBLY                    | 74450001                   |          |          | 1    |       |       |
| 5        | TYRE SET ASSEMBLY                   | 74820001                   |          | 74490001 | 1    |       |       |
| 6        | CENTER LINK PIPE ASSEMBLY           | 74810001                   |          | 74440001 | 1    |       |       |
| 7        | PARKING STAND ASSEMBLY              | 75890002                   |          |          | 1    |       |       |
| 8        | HOOK BKT ASSEMBLY                   | 74450013                   |          |          | 1    |       |       |
| 9        | HOOK ASSEMBLY                       | 79480018                   |          |          | 1    |       |       |
| 10       | DRAWBAR JOINT PLATE                 | 74810003                   |          | 74530005 | 2    |       |       |
| 11       | COIL SPRING BKT ASSEMBLY            | 79220001                   |          |          | 1    |       |       |
| 12       | COIL SPRING BKT BUSH                | 79220026                   |          |          | 1    |       |       |
| 13       | COIL SPRING BKT ASSEMBLY SIDE PLATE | 79220005                   |          |          | 2    |       |       |
| 14       | AXLE TYRE HUB                       | 10090035                   |          |          | 2    |       |       |
| 15       | AXLE HUB MOUNTING ASSEMBLY          | 74480001                   |          | 74480005 | 2    |       |       |
| 16       | HUB AXLE LOCK PLATE                 | 74530004                   |          |          | 2    |       |       |
| 17       | HEX HEAD BOLT M16X40X2MM            | 10260374                   |          |          | 2    |       |       |
| 18       | HEX HEAD BOLT M16x65x2P             | 10260378                   |          |          | 8    |       |       |
| 19       | GREASE NIPPLE M10x1.25P             | 10300005                   |          |          | 2    |       |       |
| 20       | PIN 50X280L                         | 10020053                   |          |          | 1    |       |       |
| 21       | NYLOCK NUT M16x2P                   | 10280005                   |          |          | 19   |       |       |
| 22       | HEX HEAD BOLT M16x55                | 10260454                   |          |          | 8    |       |       |
| 23       | HUB BOLT                            | 10260277                   |          |          | 12   |       |       |
| 24       | TYRE ASSEMBLY                       | 11030024/11030028/11030026 |          |          | 1    |       |       |
| 25       | TYRE HUB ASSEMBLY                   | 74500001                   |          |          | 2    |       |       |
| 26       | HUB NUT                             | 10280061                   |          |          | 12   |       |       |
| 27       | HEX HEAD BOLT M18x190L              | 10260156                   |          |          | 6    |       |       |
| 28       | HEX HEAD BOLT M24x90x3P             | 10260469                   |          |          | 8    |       |       |
| 29       | CRUMBLER HOLDING PIPE ASSEMBLY      | 79740038                   | 79740040 | 79740027 | 1    |       |       |
| 30       | HYDRAULIC CYLINDER                  | 10450015                   |          |          | 1    |       |       |
| 31       | MAIN CRUMBLER ASSEMBLY              | 79740039                   | 79740049 | 79740026 | 1    |       |       |
| 32       | MAIN HYDRAULIC CYLINDER             | 10450040                   |          | 10450042 | 1    |       |       |
| 33       | SPRING WASHER 16MM                  | 10270005                   |          |          | 19   |       |       |
| 34       | NYLOCK NUT M18x2P                   | 10280020                   |          |          | 6    |       |       |
| 35       | HOSE PIPE ASSEMBLY                  | 74600006                   |          |          | 1    |       |       |
| 36       | CYLINDER STROKE CONTROL SEGMENTS    | 10301131                   |          |          | 1    |       |       |
| 37       | SPRING MOUNTING PIPE ASSEMBLY       | 79220011                   |          |          | 1    |       |       |
| 38       | HEX HEAD BOLT M16x160x2P            | 10260406                   |          |          | 3    |       |       |
| 39       | HEX HEAD BOLT M20x170x2.5P          | 10260319                   |          |          | 4    |       |       |
| 40       | HEX HEAD BOLT M20x160x2.5P          | 10260402                   |          |          | 5    |       |       |
| 41       | SPRING WASHER 20MM                  | 10270016                   |          |          | 9    |       |       |
| 42       | NYLOCK NUT M20x2.5P                 | 10280021                   |          |          | 9    |       |       |
| 43       | PIN                                 | 79480006                   |          |          | 1    |       |       |
| 44       | PIN Ø25x130L                        | 10020036                   |          |          | 6    |       |       |
| 45       | CRUMBLER MOUNTING SIDE PLATE ASSY.  | 79740035                   |          |          | 2    |       |       |
| 46       | UCP BEARING 210                     | 10050143                   |          |          | 2    |       |       |

WHEELED DISC HEAVY SERIES WITH CRUMBLER



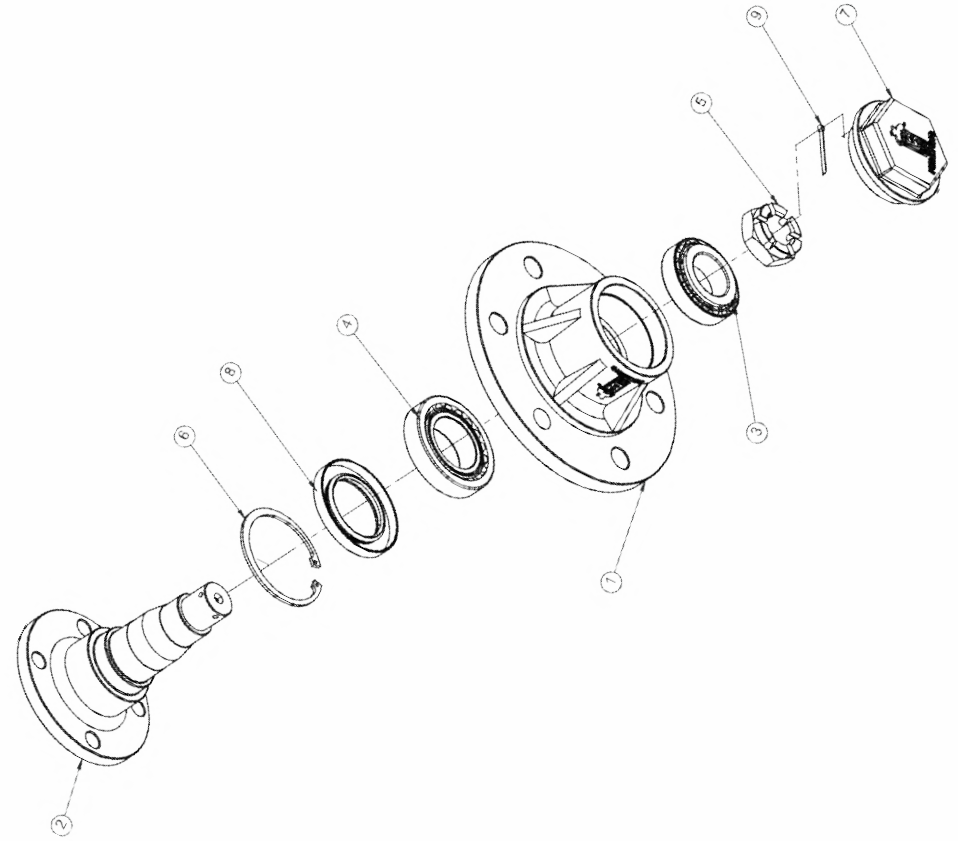


**IMPORTANT NOTE :** TO AVOID FROM DUST & MUD  
THIS GREASE NIPPLE DIRECTION SHOULD BE IN  
REAR SIDE OF BOTH FRONT & REAR GANG

**PART LIST HDHH**

| ITEM NO. | DESCRIPTION                | PART NO. | QTY. |
|----------|----------------------------|----------|------|
| 1        | BEARING SPOOL SQ. 41MM     | 10340017 | 1    |
| 2        | HEX BOLT M8x1.25x40L       | 10260373 | 6    |
| 3        | SPRING WASHER 8MM          | 10270001 | 6    |
| 4        | BEARING HUB COVER          | 10150016 | 2    |
| 5        | OIL SEAL 80x110x13T        | 10010020 | 2    |
| 6        | BEARING HUB GASKET         | 10040048 | 2    |
| 7        | BEARING-30214              | 10050040 | 2    |
| 8        | BEARING HUB                | 10090031 | 1    |
| 9        | CIRCLIP EXTERNAL 70A       | 10390012 | 1    |
| 10       | BEARING SPOOL CAP SQ. 41MM | 10180021 | 1    |
| 11       | GREASE NIPPLE 10MM         | 10300089 | 1    |
| 12       | HUB SAFETY COVER           | 79590001 | 1    |
| 13       | ALLEN BOLT M6X12           | 10260178 | 2    |
| 14       | SPRING WASHER 6MM          | 10270033 | 2    |
| 15       | HEX HEAD BOLT M8x16x1.25P  | 10260779 | 1    |

**BEARING HUB ASSEMBLY**



**TYRE BEARING HUB ASSEMBLY**

| Sr. No. | Description                     | Part No. | Quantity |
|---------|---------------------------------|----------|----------|
| 1       | TYRE BEARING HUB                | 10090019 | 1        |
| 2       | TYRE AXLE SHAFT                 | 10290041 | 1        |
| 3       | BEARING 32209                   | 10050013 | 1        |
| 4       | BEARING 32211                   | 10050009 | 1        |
| 5       | CASTLE NUT M36X2P               | 10280071 | 1        |
| 6       | INTERNAL CIRCLIP B100 4 MM THK. | 10390007 | 1        |
| 7       | TYRE BEARING HUB CAP            | 10180020 | 1        |
| 8       | OIL SEAL 65X100X12              | 10010027 | 1        |
| 9       | SPLIT PIN 4MMX55MM (L)          | 10020054 | 1        |

## DELIVERY CHECKLIST

|   |   |
|---|---|
| <b>Dealer Pre-Delivery (Please Tick)</b>  | <b>Please Complete all Dealer information Below</b>   |
| <p><b>1. Dealer Pre-Delivery Checklist</b></p> <ol style="list-style-type: none"> <li>1. The customer or person responsible has been given the operator's manual.</li> <li>2. The customer undertakes to read the complete operator's manual and understands all aspects of the manual before operation of the machine.</li> <li>3. All safety, operational and maintenance information have been explained and demonstrated.</li> <li>4. All greasing and oil points, stickers, guarding and ID plate have been identified and physically pointed out.</li> <li>5. The customer agrees that it is his responsibility to read and carry out the safety, maintenance and operation as per this operator's manual.</li> </ol> | <p><b>Dealer Information</b></p> <p>Dealer's Name.....</p> <p>Address.....</p> <p>State..... Postcode.....</p> <p>Phone..... Fax.....</p> <p>Email.....</p> <p>Service Person.....</p> <p>I confirm that the pre-delivery service was performed on this machine.</p> <p>Signature.....</p> <p>Date.....</p> <p>Comments.....</p>                |
| <b>Customer Delivery (Please Tick)</b>  | <b>Please Complete all Customer Information Below</b>   |
| <p><b>2. Customer Delivery Checklist</b></p> <ol style="list-style-type: none"> <li>1. The customer or person responsible has been given the operator's manual.</li> <li>2. The customer undertakes to read the complete operator's manual and understands all aspects of the manual before operation of the machine.</li> <li>3. All safety, operational and maintenance information have been explained and demonstrated.</li> <li>4. All greasing and oil points, stickers, guarding and ID plate have been identified and physically pointed out.</li> <li>5. The customer agrees that it is his responsibility to read and carry out the safety, maintenance and operation as per this operator's manual.</li> </ol>   | <p><b>Customer Information</b></p> <p>Customer's Name.....</p> <p>Address.....</p> <p>State..... Postcode.....</p> <p>Phone..... Fax.....</p> <p>Email.....</p> <p>Delivery Person.....</p> <p>I confirm that all of the delivery checks were explained and performed.</p> <p>Signature.....</p> <p>Delivery Date.....</p> <p>Comments.....</p> |



## WARRANTY CARD Customer Copy

CUSTOMER NAME Mr./ Mrs : \_\_\_\_\_

ADDRESS : \_\_\_\_\_

MOBILE NO. : \_\_\_\_\_

Email : \_\_\_\_\_

NAME OF IMPLEMENT : \_\_\_\_\_

MODEL NO. : \_\_\_\_\_

YEAR OF Mfg. : \_\_\_\_\_

SERIAL NO. : \_\_\_\_\_

REGISTRATION NO. : \_\_\_\_\_

DATE OF PURCHASING : \_\_\_\_\_

NAME OF DEALER : \_\_\_\_\_

Customer's Signature

Dealer's Signature

## FIELDKING USA, INC.

960 Holmdel Road Suite 2-02, Holmdel, NJ 07733, USA

✉ [usa@fieldking.com](mailto:usa@fieldking.com), [www.fieldkingusa.com](http://www.fieldkingusa.com)



**WARRANTY CARD**  
Dealer Copy

CUSTOMER NAME Mr./ Mrs :

ADDRESS :

MOBILE NO. :

Email :

NAME OF IMPLEMENT :

MODEL NO. :

YEAR OF Mfg. :

SERIAL NO. :

REGISTRATION NO. :

DATE OF PURCHASING :

NAME OF DEALER :

Customer's Signature

Dealer's Signature

**FIELDKING USA, INC.**

960 Holmdel Road Suite 2-02, Holmdel, NJ 07733, USA

✉ usa@fieldking.com, 🌐 www.fieldkingusa.com



**WARRANTY CARD**  
Company Copy

CUSTOMER NAME Mr./ Mrs :

ADDRESS :

MOBILE NO. :

Email :

NAME OF IMPLEMENT :

MODEL NO. :

YEAR OF Mfg. :

SERIAL NO. :

REGISTRATION NO. :

DATE OF PURCHASING :

NAME OF DEALER :

Customer's Signature

Dealer's Signature

**FIELDKING USA, INC.**

960 Holmdel Road Suite 2-02, Holmdel, NJ 07733, USA

✉ usa@fieldking.com, 🌐 www.fieldkingusa.com